

20
19

VERSYS®, KLX® & CONCOURS®

STREET & DUAL-PURPOSE MOTORCYCLES



Kawasaki



Versys® 1000 SE LT+ in Metallic Flat Spark Black/Pearl Flat Stardust White

Non U.S. model specs may be depicted. Equipment illustrated and specification may vary to meet individual markets.

UNMATCHED PERFORMANCE

Kawasaki motorcycles combine thrilling performance with everyday versatility. From the Concours®14 ABS supersport tourer to the new Versys® 1000 SE LT+ motorcycle that's eager for urban exploration, all Kawasaki motorcycles are built to put you in command of the open road. And when getting lost is part of the fun, the KLX®250 dual-purpose motorcycle is ready to ride anywhere—on- or off-road. For every journey, there's a Kawasaki motorcycle that's fueled by the promise of Good Times™.

MOTORCYCLES

CONTENTS

Street & Dual-Purpose Overview	02-03
Versys® Family	04-05
Versys® 1000 SE LT+	06-11
Versys® 650 ABS & Versys® 650 LT	12-17
Versys®-X 300	18-21
KLX®250	22-25
Concours®14 ABS	26-29
Specs	30-31

The background of the advertisement is a blurred, high-speed shot of a road winding through a green, hilly landscape. A large, dark green diagonal shape cuts across the upper left portion of the image, serving as a backdrop for the brand name and the main slogan.

VERSYS®

ANY ROAD, ANY TIME.

Find the ultimate combination of fun and performance aboard a Versys® motorcycle. Ideal for both urban adventures and playful romps along winding backroads, the Versys family delivers maximum riding excitement across a variety of street-riding situations. The unique combination of a comfortable riding position, long-travel suspension, smooth power and sporty handling means that you're equipped to tackle any road, any time.

Versys® 650 ABS in Metallic Moondust Gray/Metallic Flat Spark Black



*NEW 2019 **VERSYS® 1000 SE LT+***

A rider wearing a helmet and gear is riding a Versys 1000 SE LT+ motorcycle on a desert road. The motorcycle is white and black with a large wind deflector. The background shows a desert landscape with mountains under a cloudy sky. A large green diagonal graphic element is on the left side of the image.

ADVENTURE OF A LIFETIME

Open-road adventure awaits when you ride the new 2019 Versys® 1000 SE LT+ motorcycle. With versatility in its DNA and comfort at the core, the latest edition boasts upgrades in nearly every facet: updated styling, innovative technology, state-of-the-art electronics and highest in-class comfort levels. If you're looking for next-level adventure, you'll find it aboard the new Versys 1000 SE LT+.

Non U.S. model specs may be depicted. Equipment illustrated and specification may vary to meet individual markets.



Versys® 1000 SE LT+ in Metallic Flat Spark Black/Pearl Flat Stardust White



NEW KAWASAKI ELECTRONIC CONTROL SUSPENSION (KECS)

Inspired by the semi-active system of the Kawasaki Ninja® ZX™-10R SE supersport bike, the Kawasaki Electronic Control Suspension (KECS) adapts to the road in real time. KECS includes electronically adjustable rear preload—a first for Kawasaki—allowing you to choose from three payload modes at the push of a button: rider only, rider with luggage or rider with passenger and luggage. Paired with an adjustable 43mm Showa cartridge front fork and new Showa BFRC lite rear shock with remote preload adjuster, the new Versys® 1000 SE LT+ soaks up imperfections on the street.

POWER & PERFORMANCE

The new liter-class power of the Versys® 1000 SE LT+ motorcycle is produced by a 1,043cc engine, tuned for flexibility so it's just as comfortable cruising at low-rpm as it is being ridden in the mid- to high-rpm range. The addition of electronic throttle valves improves engine power delivery, while also enabling new electronic cruise control. A race-inspired Assist and Slipper clutch helps smooth out aggressive downshifting and provides a lighter feel at the clutch lever.

Non U.S. model specs may be depicted. Equipment illustrated and specification may vary to meet individual markets.

NEW 2019 VERSYS® 1000 SE LT+

INSPIRATION AWAITS

STYLING

The fresh styling of the Versys® 1000 SE LT+ motorcycle defines the evolution of the Versys family. The sculpted bodywork features a more flowing design crafted around rider comfort with a new upper cowl and wider fairing. LED lighting sharpens the look of the new Versys 1000 SE LT+, while stylish lightweight six-spoke 17-inch wheels contribute to sporty, responsive handling.



Metallic Flat Spark Black/Pearl Flat Stardust White

NEXT-LEVEL TECHNOLOGY

At the center of the intelligent new Versys® 1000 SE LT+ is an Inertial Measurement Unit (IMU) that measures vehicle movement inertia along five degrees of freedom. Together with Kawasaki's unique and proprietary advanced modeling software comes a total engine and chassis management package inspired by WorldSBK championship-winning technology. Trace your intended line through the corner with Kawasaki Cornering Management Function (KCMF) and let the advanced precision of Kawasaki TRaction Control (KTRC) and Kawasaki Intelligent anti-lock Brake System (KIBS) take your ride to the next level.

BRAKES

Stopping power on the Versys® 1000 SE LT+ motorcycle features a pair of new large 310mm petal brake discs up front, matched with opposed four-piston monobloc calipers. A new radial-pump front brake master cylinder adds to the superb feel. The Versys® 1000 SE LT+ is equipped with new IMU-enabled Kawasaki Intelligent anti-lock Brake System (KIBS) ABS for dynamic corner-braking management and next-level control.

COMFORT & CONVENIENCE

Designed to keep you comfortable longer, the Versys® 1000 SE LT+ includes a larger windscreen, which can be height-adjusted without tools. A centrally located vent helps reduce negative pressure in the cockpit. New hand guards provide added wind protection while LED cornering lamps built into the shrouds illuminate the curves at night. New highly durable paint* in high touch areas features a special coat that allows certain types of scratches to repair themselves, helping to keep your motorcycle looking showroom sharp mile after mile.

Non U.S. model specs may be depicted. Equipment illustrated and specification may vary to meet individual markets.

*Paint recovery is not immediate and may take more than one week. The paint will not recover from all scratches, including those caused by a coin, key or zip fastener.

NEW 2019 VERSYS® 1000 SE LT+

A RIDE ABOVE THE REST

TOURING FEATURES

Generous touring features highlight the Versys® 1000 SE LT+ motorcycle, with standard equipment focused on all-day comfort for your sport-touring adventure. A standard comfort seat with added cushioning keeps you comfortable for miles while an optional accessory low seat* (20mm lower) provides an easier reach to the ground. Plus, a DC outlet can now power your devices during the ride while the Kawasaki Quick Release saddlebags give you the versatility to take it all with you.

*Sold separately as a Kawasaki Genuine Accessory.



ADVANCED ELECTRONICS

With a suite of advanced electronics, the Versys® 1000 SE LT+ proves to be a pinnacle of sophistication. Built-in Bluetooth enables smartphone connectivity, and RIDELOGY THE APP lets you view detailed riding logs and vehicle functions from your phone. A new high-grade full-color TFT dash meter offers a detailed view at a glance, with self-adjusting screen brightness for optimum visibility. All-inclusive integrated riding modes link KTRC, Power Mode and Kawasaki Electronic Control Suspension (KECS), allowing riders to select a preset combination of settings with the push of a button. A dual-direction Kawasaki Quick Shifter (KQS) allows clutchless upshifts and downshifts for seamless acceleration and smooth deceleration.

RIDELOGY THE APP is not intended for use during vehicle operation.
Only use RIDELOGY THE APP when the vehicle is not being operated and it is safe to do so.



2019 *VERSYS® 650 LT & VERSYS® 650 ABS*

RIDE WITHOUT LIMITS

Versatility is the foundation of the Versys® 650 LT and Versys® 650 ABS motorcycles. Whether you're navigating city streets or tackling mile after mile of open highway, the Versys 650 LT and Versys 650 ABS are built for comfort. For the longer distances, the Versys 650 LT comes with hand guards for added comfort and is also equipped with a set of convenient saddlebags, so you can adventure farther.

ENGINE

The Versys® 650 LT and Versys® 650 ABS feature a compact 649cc parallel-twin engine, tuned to deliver strong, quick-revving power, especially in the low- to mid-range.



Versys® 650 ABS in Metallic Moondust Gray/Metallic Flat Spark Black

UPRIGHT RIDING POSITION

An upright riding position provides relaxed, heads-up visibility in various riding environments, and allows riders to enjoy all-day riding comfort.

LONG-TRAVEL SUSPENSION

The long-travel suspension ensures sporty handling and all-day comfort. It soaks up bumps with ease and helps give riders more confidence on a variety of road conditions.



SADDLEBAGS & ACCESSORIES

Two KQR™ 28-liter Hard Saddlebags featuring quick release capabilities come standard on the Versys® 650 LT. The added function and on-board storage reveal the touring potential. Together with the ample 5.5-gallon fuel tank and a host of available Kawasaki Genuine Accessories, the possibilities are endless.

Non U.S. model specs may be depicted. Equipment illustrated and specification may vary to meet individual markets.

2019 VERSYS® 650 LT

ENDLESS POSSIBILITIES



■ Metallic Moondust Gray/Metallic Flat Spark Black

HAND GUARDS

The Versys® 650 LT motorcycle features added hand guards to help shield against the elements. Keep your hands comfortable for the long haul.



EASY ADJUSTABILITY

The rider interface features are as versatile as the Versys® 650 LT motorcycle itself. Adjust the rear shock preload to optimize for loaded saddlebags, solo or two-up riding with a remote preload adjuster or personalize the clutch reach with a five-way adjustable clutch lever. The large windshield features up to two inches of tool-free height-adjustability, and a gear position indicator integrated within the dash increases shifting confidence.



Versys® 650 ABS in Metallic Moondust Gray/Metallic Flat Spark Black

2019 **VERSYS® 650 ABS**

ALL DAY.
EVERY DAY.



■ Metallic Moondust Gray/Metallic Flat Spark Black

With agility and all-day comfort, few can match the Versys® 650 ABS motorcycle when it comes to performance, versatility and sheer fun. Answer the call of the open road with the nimble yet powerful 649cc parallel twin-powered Versys 650 ABS. The upright riding position, exceptional long-range potential and sporty chassis are the recipe for a fun open-road adventure on the interstate or through backroads. From your urban commute to your weekend adventure, the Versys 650 ABS is ready to pursue your destination.

2019 **VERSYS®-X 300**

THERE'S MORE TO EXPLORE

The Kawasaki Versys®-X 300 motorcycle is built for urban adventure. With a compact and responsive 296cc twin-cylinder engine, the Versys-X 300 features nimble, lightweight handling to take on any size adventure. Whether you're commuting or taking a day trip, this versatile motorcycle is a willing companion. With a lightweight chassis and long-travel suspension, the possibilities are endless.

Versys®-X 300 ABS in Metallic Moondust Gray/Metallic Flat Spark Black





STYLING

An upright seating position and ample wind protection mean you can go the distance. A convenient rear carrier makes it equipped for adventure, while spoked wheels and a bold design exude the spirit of exploration.

Versys®-X 300 ABS in Metallic Moondust Gray/Metallic Flat Spark Black

2019 VERSYS®-X 300

YOUR TICKET TO ADVENTURE



Metallic Moondust Gray/Metallic Flat Spark Black

VERSATILITY

A lightweight motorcycle that is easy to maneuver is one you can take nearly anywhere. From rural backroads to open highways, the Versys®-X 300 motorcycle is your adventure partner. A generous 4.5-gallon fuel capacity allows for fewer fill-ups while the upright riding position, roomy ergonomics and plush suspension offer all-day comfort.

Model available in ABS and Non-ABS.



COMFORT & CONVENIENCE

Low seat height and a tapered seat design ensures an easy reach to the ground at stops for greater rider comfort and confidence. The front cowl and front windshield provide excellent wind and weather protection for you and your passenger. With comfort and convenience prioritized, the only thing left to do is enjoy the ride.

2019

KLX[®]250

RIDE OFF THE MAP

Conquer the map with confidence on the 2019 KLX[®]250 motorcycle. Exceptional on- and off-road performance lets you go farther across exciting terrain. With performance that appeals to riders of various skill levels, the KLX250 is lightweight and features long-travel suspension. And with KX™ motocross racing-inspired bodywork, you can take on the adventure in sharp and aggressive style.

KLX[®]250 in Lime Green





CHASSIS

The KLX®250 motorcycle is among the most capable entry-level motorcycles in the dual-purpose category, featuring a light curb weight and ample ground clearance. With full-size wheels and tires, comfortably tackle bumps and rocks in the trail, while also cruising the pavement with ease.

KLX®250 in Matrix Camo Gray

2019 KLX®250

BUILT FOR ADVENTURE



SUSPENSION

The KLX®250 motorcycle can accommodate a wide range of riders thanks to adjustable rear Uni-Trak® suspension. Coupled with a long-travel USD fork, the KLX250 amounts to a superior ride even in challenging off-road terrain. Easy to manage and fun to ride, the KLX250 proves to be the ultimate dual-purpose companion.



Lime Green



Matrix Camo Gray



ENGINE

The 249cc DOHC fuel-injected four-stroke engine of the KLX®250 creates smooth, responsive power, easy starting and consistent performance. Get things started with the push of a button and enjoy the crisp, responsive power on the street or on the trails. The smooth acceleration and strong torque can power you through rugged terrain.

2019
CONCOURS[®]14 ABS

REDEFINED POWER

Supersport performance combined with all-day comfort—it might seem impossible until you ride the Kawasaki Concours[®]14 ABS motorcycle. Kawasaki's sport-touring powerhouse gets the soul of a Ninja[®] ZX™-14R sportbike and adds superior performance, advanced technology and premium features for the ultimate sport-touring experience. And to top it off, the Concours14 ABS comes with the confidence of a 36-month limited warranty.

Concours[®]14 ABS in Metallic Matte Fusion Silver/Metallic Spark Black





K-ACT

The Kawasaki Advanced Coactive-braking Technology ABS system (K-ACT) helps boost braking confidence and wield massive stopping power, with dual floating 310mm petal-style discs and four-piston calipers in the front and a 270mm petal-style disc in the rear.

Concours®14 ABS in Metallic Matte Fusion Silver/Metallic Spark Black

2019 CONCOURS®14 ABS

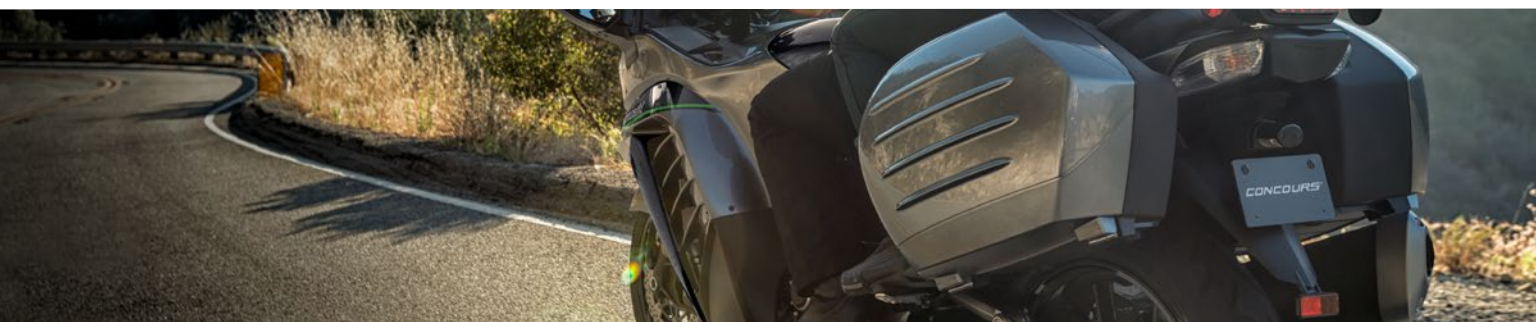
MORE THAN CAPABLE



Metallic Matte Fusion Silver/Metallic Spark Black

ENGINE

With a 1,352cc inline four-cylinder engine, the Concours®14 ABS motorcycle produces a wide range of smooth-revving power. Digital fuel injection with a dual throttle-valve system ensures an efficient ride.



TOURING READY

The Concours®14 ABS motorcycle comes with a host of touring features including a pair of water-resistant KQR™ Hard Saddlebags featuring quick release capabilities, an electrically adjustable windscreen and standard heated grips. The Tire Pressure Monitoring System (TPMS) warns of low tire pressure, and the Fuel Economy Assistance Mode helps maximize fuel range. A Tetra-Lever rear suspension with stepless rebound damping adjustment and remote spring preload adjuster helps keeps the ride smooth.

SPECS

Versys® 1000 SE LT+

Versys® 650 LT

Versys® 650 ABS

ENGINE	4-stroke, 4-cylinder, DOHC, 16-valve, liquid-cooled	4-stroke, 2-cylinder, DOHC, liquid-cooled, 4 valves per cylinder parallel twin	4-stroke, 2-cylinder, DOHC, liquid-cooled, 4 valves per cylinder parallel twin
DISPLACEMENT	1,043cc	649cc	649cc
BORE X STROKE	77.0 x 56.0mm	83.0 x 60.0mm	83.0 x 60.0mm
COMPRESSION RATIO	10.3:1	10.8:1	10.8:1
MAXIMUM TORQUE	75.2 lb-ft @ 7,500 rpm	47.0 lb-ft @ 7,000 rpm	47.0 lb-ft @ 7,000 rpm
FUEL SYSTEM	DFI® with 38mm Keihin ETV throttle bodies (4)	DFI® with 38mm Keihin throttle bodies (2)	DFI® with 38mm Keihin throttle bodies (2)
IGNITION	TCBI with digital advance	TCBI with digital advance	TCBI with digital advance
TRANSMISSION	6-speed, return shift, Kawasaki Quick Shifter (KQS)	6-speed with positive neutral finder	6-speed with positive neutral finder
FINAL DRIVE	Sealed chain	Sealed chain	Sealed chain
ELECTRONIC RIDER AIDS	Kawasaki Electronic Control Suspension (KECS), Kawasaki Cornering Management Function (KCMF), Kawasaki Traction Control (KTRC), Kawasaki Intelligent anti-lock Brake System (KIBS), Kawasaki Quick Shifter (KQS) (dual direction), Electronic Cruise Control, LED Cornering Lights		
FRONT SUSPENSION / WHEEL TRAVEL	43mm inverted fork with KECS-controlled rebound and compression damping, manual spring preload adjustability and top-out springs/5.9 in	41mm hydraulic telescopic fork with stepless adjustable rebound and preload/5.9 in	41mm hydraulic telescopic fork with stepless adjustable rebound and preload/5.9 in
REAR SUSPENSION / WHEEL TRAVEL	Horizontal back-link New Uni-Trak®, BFRC gas charged shock with piggyback reservoir, KECS-controlled compression and rebound damping electronically-adjustable spring preload/5.9 in	Single offset laydown shock with remote adjustable spring preload/5.7 in	Single offset laydown shock with remote adjustable spring preload/5.7 in
FRONT TIRE	120/70 ZR-17	120/70 ZR17	120/70 ZR17
REAR TIRE	180/55 ZR17	160/60 ZR17	160/60 ZR17
FRONT BRAKES	Dual 310mm petal-style discs with four-piston calipers, ABS	Dual 300mm petal-style discs with 2-piston calipers, ABS	Dual 300mm petal-style discs with 2-piston calipers, ABS
REAR BRAKES	Single 250mm petal disc with single-piston caliper, ABS	Single 250mm petal-style disc with single-piston caliper, ABS	Single 250mm petal-style disc with single-piston caliper, ABS
FRAME TYPE	Twin-spar aluminum	Double pipe diamond frame constructed from high-tensile steel	Double pipe diamond frame constructed from high-tensile steel
RAKE/TRAIL	27.0°/4.0 in	25°/4.3 in	25°/4.3 in
OVERALL LENGTH	89.4 in	85.2 in	85.2 in
OVERALL WIDTH	37.4 in	37.2 in	33.1 in
OVERALL HEIGHT	58.7 in/60.2 in (windshield down/up)	55.1 in/57.1 in (windshield down/up)	55.1 in/57.1 in (windshield down/up)
GROUND CLEARANCE	5.9 in	6.7 in	6.7 in
SEAT HEIGHT	33.1 in	33.1 in	33.1 in
CURB WEIGHT	566.7 lb (+ Saddlebags, Handguards, & Hardware approx. 20 lb.)**	476.3 lb (+ Saddlebags, Handguards, & Hardware approx. 20 lb.)**	476.3 lb**
FUEL CAPACITY	5.5 gal	5.5 gal	5.5 gal
WHEELBASE	59.8 in	55.7 in	55.7 in
COLOR CHOICES	Metallic Flat Spark Black/Pearl Flat Stardust White	Metallic Moondust Gray/Metallic Flat Spark Black	Metallic Moondust Gray/Metallic Flat Spark Black
SPECIAL FEATURES	Rideology the App Smartphone Connectivity, TFT Instrumentation, Highly Durable Paint, LED Headlight, LED Cornering Lights, LED Taillight		
WARRANTY	24 Month Limited Warranty	24 Month Limited Warranty	12 Month Limited Warranty
KAWASAKI PROTECTION PLUS™ (OPTIONAL)	12, 24, 36 or 48 months	12, 24, 36 or 48 months	12, 24, 36 or 48 months

**Curb weight includes all necessary materials and fluids to operate correctly, full tank of fuel (more than 90 percent capacity) and tool kit (if supplied). When equipped, California evaporative emissions equipment adds approximately 2.2 lb.
Specifications subject to change.

Versys®-X 300

KLX®250

Concours®14 ABS

ENGINE	4-stroke, 2-cylinder, DOHC, liquid-cooled	4-stroke, 1-cylinder, DOHC, 4-valves, liquid-cooled	4-stroke, 4-cylinder, DOHC, 4-valve, liquid-cooled
DISPLACEMENT	296cc	249cc	1,352cc
BORE X STROKE	62.0 x 49.0mm	72.0 x 61.2mm	84.0 x 61.0mm
COMPRESSION RATIO	10.6:1	11.0:1	10.7:1
MAXIMUM TORQUE	19.2 lb-ft @ 10,000 rpm	15.2 lb-ft @ 7,000 rpm	100.5 lb-ft @ 6,200 rpm
FUEL SYSTEM	DFI® with 32mm throttle bodies (2)	DFI® with 34mm throttle body	DFI® with 40mm throttle bodies (4)
IGNITION	TCBI with digital advance	Electric CDI	TCBI with digital advance
TRANSMISSION	6-speed, return shift	6-speed, return shift	6-speed
FINAL DRIVE	Sealed chain	Sealed chain	Tetra-Lever shaft drive
FRONT SUSPENSION / WHEEL TRAVEL	Telescopic fork/5.1 in	Telescopic fork/10.0 in	43mm inverted, telescopic fork with adjustable rebound damping and spring preload/4.4 in
REAR SUSPENSION / WHEEL TRAVEL	Uni-Trak® swingarm/5.8 in	Uni-Trak® swingarm/9.1 in	Tetra-Lever with stepless rebound damping adjustment and remote spring preload adjuster/5.4 in
FRONT TIRE	100/90-19M/C 57S	3.00-21 51P	120/70 ZR-17
REAR TIRE	130/80-17M/C 65S	4.60-18 63P	190/50 ZR-17
FRONT BRAKES	Single Disc, ABS	Single disc	Dual floating 310mm petal-style discs with four-piston calipers, ABS
REAR BRAKES	Single Disc, ABS	Single disc	Single 270mm petal-style disc, single-piston caliper, ABS
FRAME TYPE	Tubular, diamond	Tubular, semi-double cradle	Monocoque Aluminum
RAKE/TRAIL	24°/4.3 in	26.5°/4.1 in	26.0°/4.4 in
OVERALL LENGTH	85.4 in	86.6 in	87.8 in
OVERALL WIDTH	33.9 in	32.3 in	31.1/39.4 wo/w saddlebags
OVERALL HEIGHT	54.7 in	47.4 in	52.9 in/57.7 in (windshield down/up)
GROUND CLEARANCE	7.1 in	11.2 in	4.9 in
SEAT HEIGHT	32.1 in	35.0 in	32.1 in
CURB WEIGHT	385.9 lb/381.5 (non-ABS)**	304.3 lb**	690.2 lb (672.5 w/o saddlebags)**
FUEL CAPACITY	4.5 gal	2.0 gal	5.8 gal
WHEELBASE	57.1 in	56.3 in	59.8 in
COLOR CHOICES	Metallic Moondust Gray/Metallic Flat Spark Black	Lime Green, Matrix Camo Gray	Metallic Matte Fusion Silver/Metallic Spark Black
WARRANTY	12 Month Limited Warranty	12 Month Limited Warranty	36 Month Limited Warranty
KAWASAKI PROTECTION PLUS™ (OPTIONAL)	12, 24, 36 or 48 months	12, 24, 36 or 48 months	12, 24, or 36 months

**Curb weight includes all necessary materials and fluids to operate correctly, full tank of fuel (more than 90 percent capacity) and tool kit (if supplied). When equipped, California evaporative emissions equipment adds approximately 2.2 lb.

Specifications subject to change.

Zedmotorz

Surra 45703, Kuwait,

PHONE: +96524828072 **FAX:** +96524828073

EMAIL: zed@zedmotorz.com

WEBSITE: www.zedmotorz.com

LIMITED WARRANTY

The Kawasaki Versys® 650 ABS, Versys®-X 300, Versys®-X 300 ABS and KLX®250 motorcycles come with a 12-month limited warranty. The Versys® 1000 SE LT+ and Versys® 650 LT models come with a 24-month limited warranty. The Concours®14 ABS motorcycle comes with a 36-month limited warranty.

UP TO FOUR YEARS ADDITIONAL COVERAGE

Let Kawasaki protect your new vehicle for years to come with Kawasaki Protection Plus™. This plan repairs or replaces covered components free of charge if found defective in material or workmanship. Everything about the plan is easy: there's no deductible, it's honored at every authorized Kawasaki dealer nationwide and it's transferable to another owner with no fee. Just ask your dealer how you can purchase additional coverage of 12, 24, 36 or 48 months, depending on the model and plan purchased. FL Lic #65500, Kawasaki Motors Corp., U.S.A., PO Box 25252, Santa Ana, CA 92799, (949) 770-0400.

KAWASAKI CARES

Always wear a helmet, eye protection and proper apparel. Never ride under the influence of drugs or alcohol. Read Owner's Manual and all on-product warnings. Professional riders shown on a closed course.



Kawasaki subscribes to the guidelines of Tread Lightly!® a program dedicated to protecting the great outdoors through education and fostering responsible enjoyment of public lands.



All trademarks, registered trademarks, logos, and copyrights are the property of their respective owners.
Accessorized unit shown.

P/N 99969-3729
Printed in the U.S.A.

Non U.S. model specs may be depicted. Equipment illustrated and specification may vary to meet individual markets.

Kawasaki